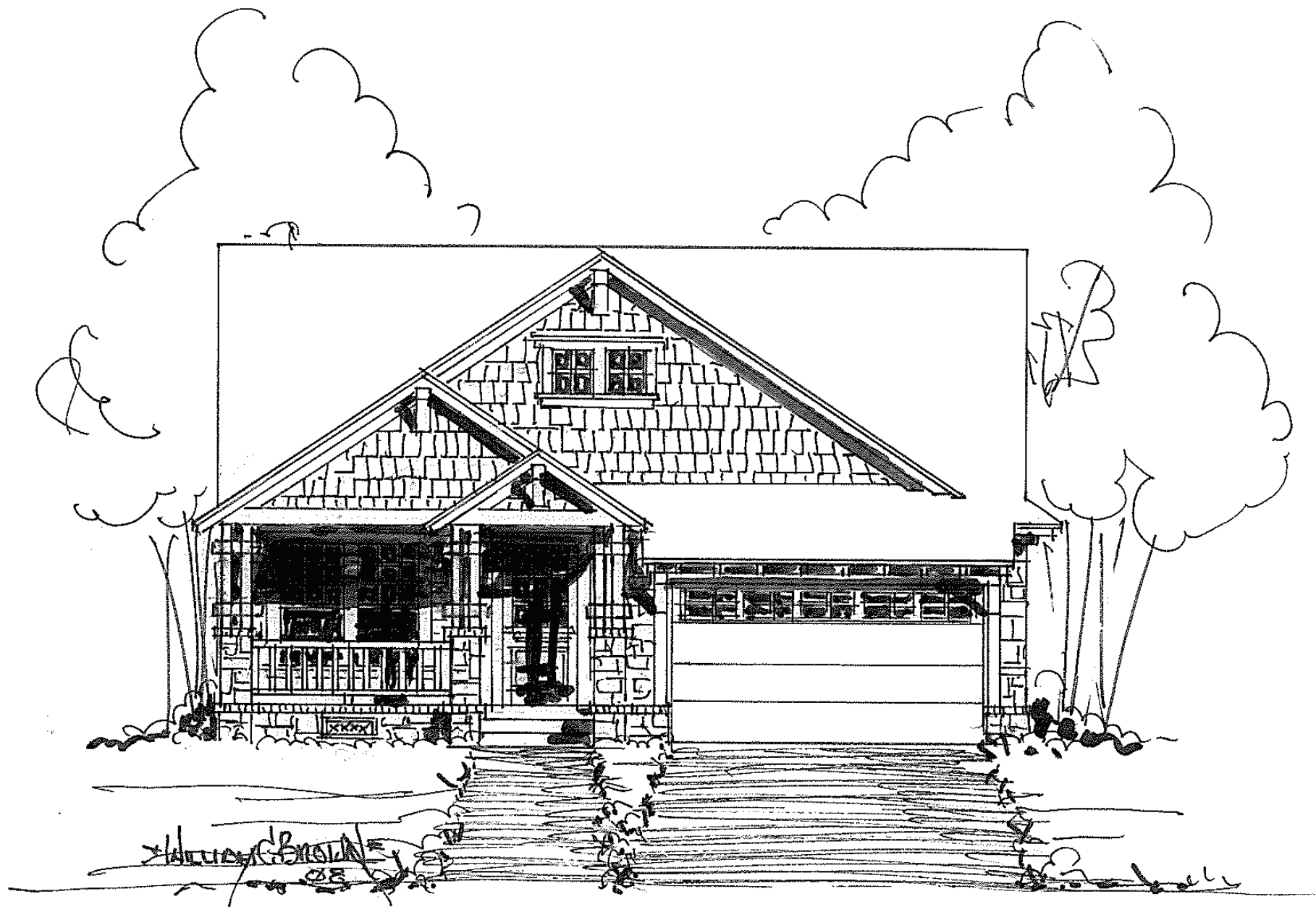


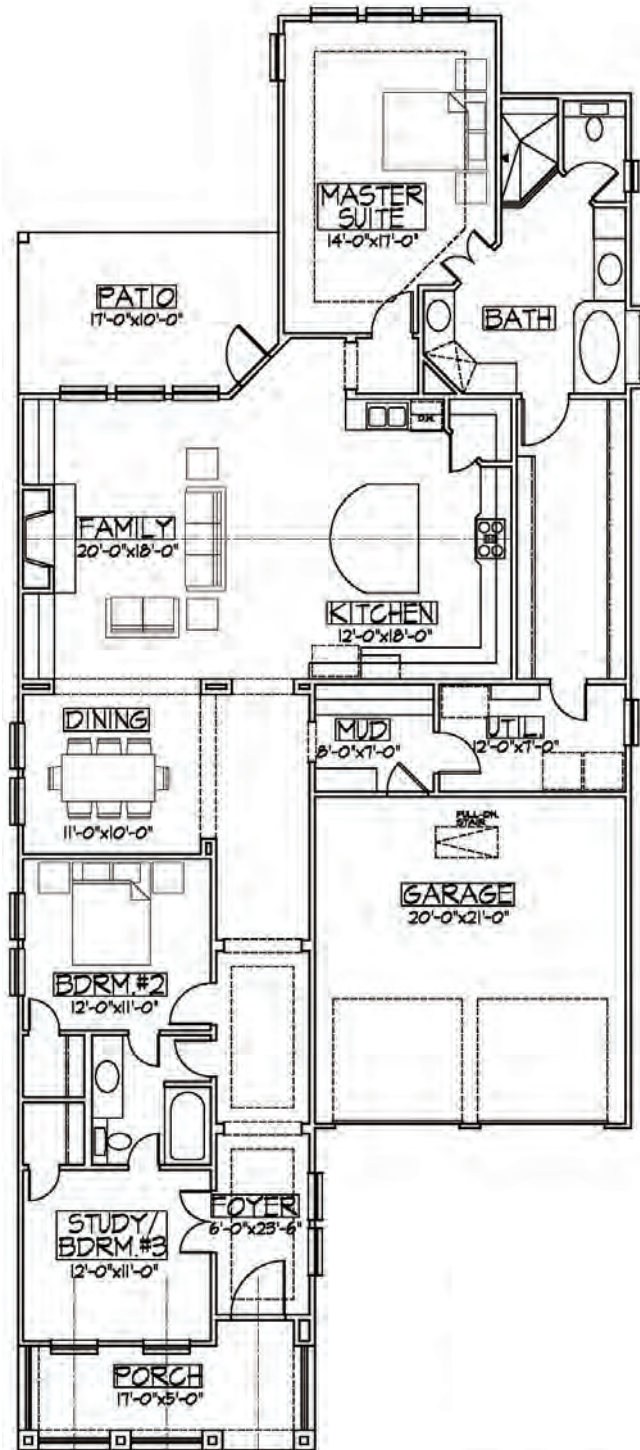


*Villager*



# Villager

PRICES, SQUARE FOOTAGE, PLANS, FEATURES, AND AVAILABILITY MAY CHANGE WITHOUT NOTICE OR OBLIGATION. PHOTOS AND RENDERINGS ARE ARTISTS' DEPICTIONS ONLY AND ARE NOT NECESSARILY TO SCALE OR REPRESENTATIVE OF THE FINAL/FINISHED PRODUCT. NOBLE VILLAGE CLASSIC HOMES LLC 8-29-08



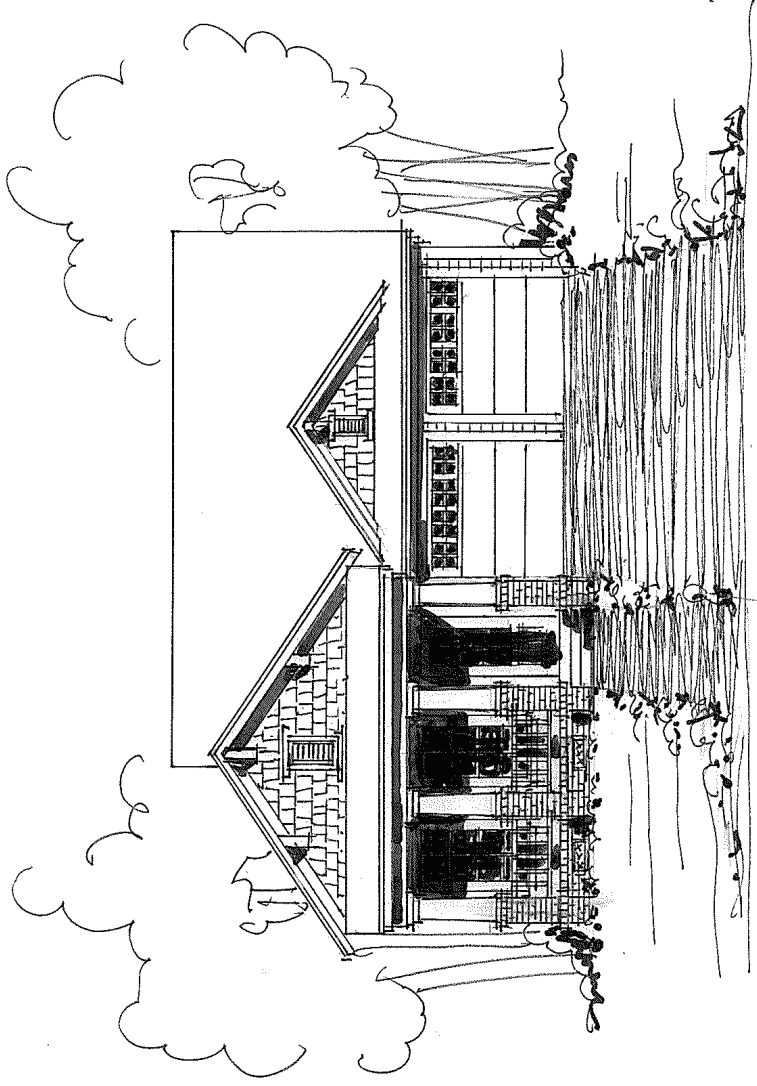
**VILLAGER**

*One Story*            2204 sq. ft.

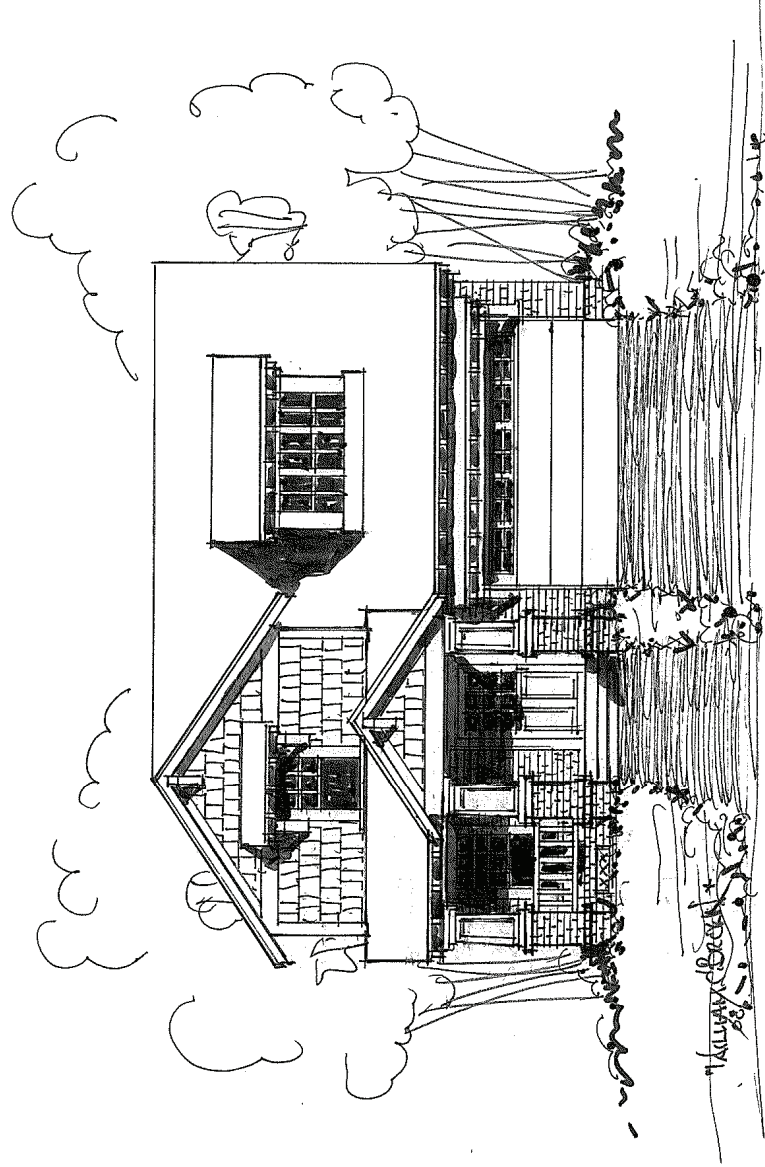
*Total Living Area*    2204 sq. ft.

◦ *Noble Village Classic Homes* ◦

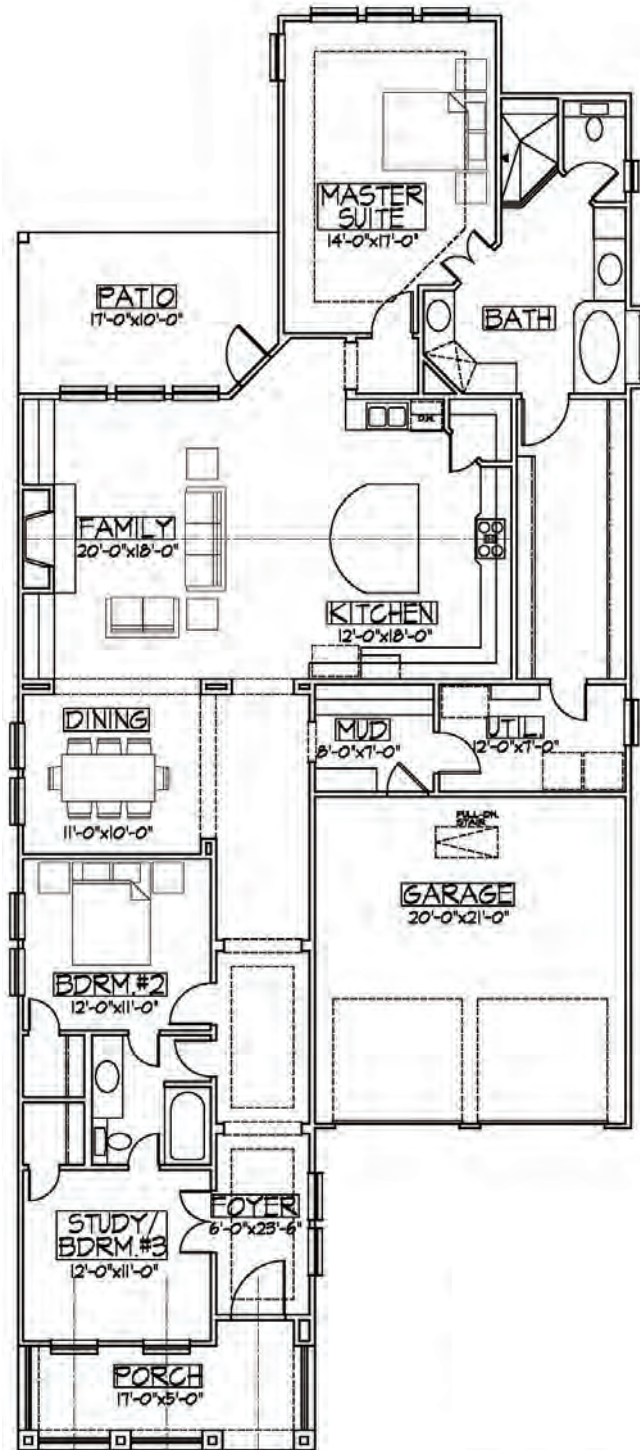
*Quality Homes, Timeless Design*



*Villager (Option 1)*



*Villager (Option 2)*



**VILLAGER**  
**OPTION 1 & 2**

*One Story*            2204 sq. ft.

*Total Living Area*    2204 sq. ft.

◦ *Noble Village Classic Homes* ◦

*Quality Homes, Timeless Design*